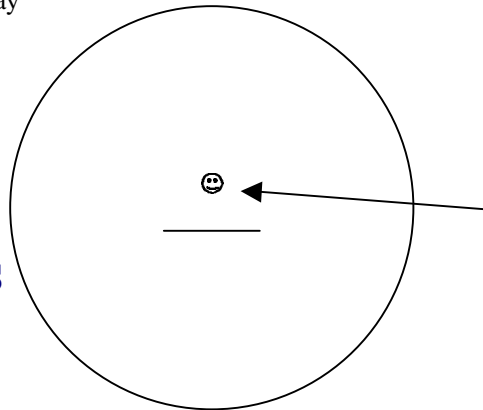


OFFSIDE RESTRAINING LINE
 ONLY 7 PAIRS OF FIELD PLAYERS ALLOWED IN
 EXCLUDING GOALIE

LACROSSE 101 FIELD & PLAYERS

LEFT D-WING -Defend arc/cover attack wings
 Provide transition support wide
 Disrupt midfield play

RIGHT D-WING - Same as left
 stronger D-Wing plays 2-way
 providing offensive support



CENTER - Takes the draw
 Marks center
 Directs transition & offense
 2-way player - covers entire field

SUB
 AREA

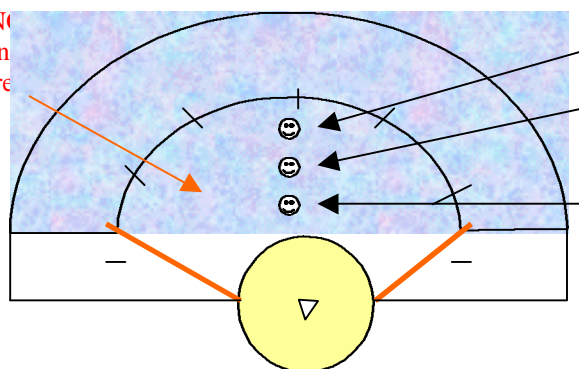
LEFT ATTACK WING - Provide speed to
 Transition offense from midfield
 Into Critical Scoring Area

RIGHT ATTACK WING - Same as left
 stronger ATTACK-Wing plays 2-way
 providing Defensive support

OFFENSIVE END

CRITICAL SCORING
 Fouls Outside 8m -shooting lan
 Fouls Inside 8m-entire arc clear

*Exception
 All Minor fouls are
 Placed on the 12m arc
 for indirect position
 (must pass before
 shooting)



THIRD HOME - Passer/shooter

SECOND HOME - Passer/shooter
 playmaker

FIRST HOME - Passer/shooter
 Hovers around crease